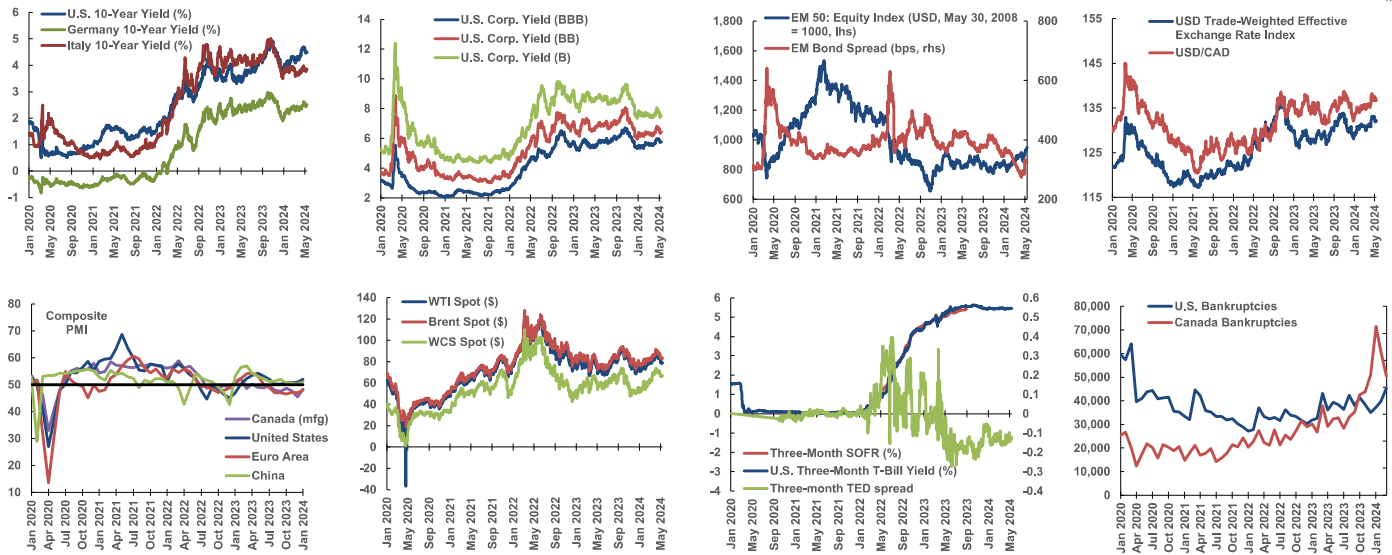


# GLOBAL FINANCIAL MARKETS

## EDC ECONOMICS

May 14, 2024



Indicator	Latest date (dd-)	Latest value	D/D	M/M	vs. baseline	One-year low	One-year high	3-2024	4-2024	5-2024	2022	2023	2024	10-year average	10-year low	10-year high
Cells are shaded if change exceeds coefficient of variation.																
Baseline = Average from Jan to Feb 2023																
<b>Interest Rates</b>																
U.S. 10-Year Bond Yield (%)	13-May	4.50	-0.02	-0.12	0.85	3.47	4.98	4.21	4.54	4.51	2.96	3.96	4.28	2.37	0.50	4.98
Three-Month Secured Overnight Financing Rate (SOFR) (%)	13-May	5.32	0.00	0.01	5.19	5.07	5.43	5.32	5.32	5.33	2.19	5.17	5.32	2.56	0.02	5.43
U.S. Three-Month Treasury Bill Yield (%)	13-May	5.45	-0.02	0.00	5.63	5.21	5.63	5.47	5.44	5.46	2.10	5.28	5.45	1.52	0.00	5.63
U.S. Corp. Yield (BBB)	13-May	5.77	-0.01	-0.13	0.27	5.31	6.72	5.58	5.83	5.78	4.79	5.83	5.63	3.93	2.05	6.72
U.S. Corp. Yield (BB)	13-May	6.44	0.01	-0.27	-0.24	5.95	8.06	6.27	6.59	6.44	6.00	6.95	6.37	5.04	3.01	8.92
U.S. Corp. Yield (B)	13-May	7.54	0.00	-0.36	-0.88	7.34	9.62	7.48	7.78	7.54	7.78	8.62	7.62	6.71	4.36	12.39
Canada 10-Year Bond Yield (%)	13-May	3.68	-0.01	-0.06	0.62	2.87	4.26	3.45	3.70	3.66	2.78	3.36	3.51	1.93	0.43	4.26
Euro Bank Risk Spread (Three-Month Euribor - German Treasury Bill)	13-May	0.33	0.02	-0.09	-0.38	0.31	0.98	0.39	0.40	0.35	0.64	0.72	0.41	0.49	0.15	1.41
Italy 10-Year Bond Yield (%)	13-May	3.85	-0.01	0.01	-0.35	3.49	5.02	3.68	3.83	3.82	3.15	4.27	3.81	2.22	0.45	5.02
Emerging Market Bond Spread (EMBI+, basis points)	13-May	325	-1	31	-53	274	429	308	287.95	328	433	390	326	381	272	641
<b>Exchange Rate</b>																
USD/CAD	13-May	1.37	-0.1%	0.7%	1.7%	1.31	1.39	1.35	1.37	1.37	1.30	1.35	1.35	1.30	1.06	1.46
USD/EUR	13-May	1.08	-0.1%	-1.3%	1.5%	1.05	1.13	1.09	1.07	1.07	1.05	1.08	1.08	1.13	0.96	1.38
YEN/USD	13-May	155.89	-0.1%	-1.3%	18.5%	134.86	157.89	150	154	156	132	141	150	117	100	158
USD/GBP	13-May	1.26	-0.4%	-0.9%	3.3%	1.21	1.31	1.27	1.25	1.25	1.24	1.24	1.26	1.34	1.07	1.72
USD/AUD	13-May	0.66	0.2%	-1.6%	-4.9%	0.63	0.69	0.66	0.65	0.66	0.69	0.66	0.66	0.73	0.56	0.95
JPM Nominal Eff. Exch. Rate USD (positive = stronger USD)	13-May	132	0.0%	0.4%	3.3%	126.83	133.89	131	132	132	128	129	131	121	100	137
<b>Stock Markets</b>																
EM 50: Share Price Index (USD, May 30, 2008=1000)	13-May	950	1%	7%	8%	776	950	880	892	930	889	842	865	899	532	1,536
S&P/TSX Composite	13-May	22,259	0%	2%	9%	18,737	22,376	21,862	21,973	22,139	20,169	20,106	21,531	16,940	11,228	22,376
S&P 500	13-May	5,221	0%	3%	30%	4,110	5,254	5,174	5,112	5,158	4,098	4,284	5,032	3,121	1,829	5,254
Euro Stoxx 50	13-May	5,079	0%	2%	22%	4,014	5,085	4,993	4,985	4,996	3,758	4,274	4,821	3,585	2,386	5,085
Nikkei 225	13-May	38,179	0%	-3%	41%	29,388	40,888	39,871	38,724	38,345	27,263	30,658	37,873	23,353	14,006	40,888
<b>Commodities</b>																
CRB Spot Index	13-May	541	-1%	-1%	-3%	505	569	532	546	543	593	546	529	464	348	644
Gold	13-May	2,340	-1%	0%	25%	1,822	2,395	2,162	2,332	2,316	1,802	1,943	2,154	1,522	1,051	2,395
WTI Crude One-Month Futures	13-May	79	1%	-8%	2%	67	94	81	85	79	95	78	79	63	-37	124
Copper	13-May	10,009	1%	7%	12%	7,812	10,009	8,681	9,453	9,804	8,815	8,479	8,790	6,937	4,310	10,730
Baltic Freight Index	13-May	2,066	-3%	19%	159%	919	3,346	2,212	1,732	1,996	1,929	1,392	1,821	1,384	290	5,650
<b>Monthly Indicators</b>																
Canadian Bankruptcies: All Industries (number)	Mar	442	--	-17%	--	248.0	625.0	373	--	--	161.8	218.4	533.0	237.1	108.0	625.0
U.S. Bankruptcy Filings (units)	Mar	45,299	--	14.1%	--	34,994	45,299	--	--	--	34,445	32,305	40,782	55,259	27,097	93,709
U.S. Auto Sales (million units, SAAR)	Apr	15.9	--	2.2%	--	14.9	16.2	15.7	15.9	--	15.1	13.9	15.5	16.2	8.6	18.4
U.S. ISM Manuf. PMI (SA)	Apr	49.2	--	0.0	--	46	50	49.2	46.9	--	60.6	53.5	49.1	53.8	41.8	64.0
Japan Business Conditions Large Manufacturers	Mar	11	--	--	--	1	12	--	--	--	14	10	11	9	-34	25
China Manufacturing Purchasing Managers Index (SA)	Apr	50.4	--	0.0	--	49	52	50.4	49.5	--	50.5	49.1	49.9	50.3	35.7	52.6
Canada Merchandise Trade Exports to U.S. (CAD billions)	Mar	47.2	--	-5.0%	--	47.1	51.6	50,924.6	--	--	39,698.1	49,574.1	48,459.5	38,050.3	20,506.6	52,579.4

Sources: Haver Analytics, EIU, EDC Economics. \* Some values may be estimates, data from a week/month/year ago.

\* Bbp difference between latest data reported and

Contact EDC Economics for more information.

economic@edc.ca

EDC.ca - Economics

EDC doesn't represent or warrant the accuracy, timeliness or completeness of the information contained herein. EDC isn't liable in any manner whatsoever for any loss or damage caused by or resulting from any inaccuracies, errors or omissions in the information contained in this document.

bbbb



# GLOBAL FINANCIAL MARKETS

## COMPILED BY EDC ECONOMICS

May 14, 2024

	Currency (vs. USD)				Stock market indices (% change based on USD market cap)				Sovereign bond spreads over U.S. government (basis points)				Consumer price index	Unemployment*	Industrial production**	Exports	Current acct. / GDP	Import cover (months)	External debt / GDP	Govt. debt / GDP
	May 13	One-day	One-month	vs. baseline	May 13	One-day	One-month	vs. baseline	May 13	One-day diff.*	One-month diff.*	Diff. vs. baseline*	Y/Y	p.p Y/Y	Y/Y	Y/Y	2023*			
	Baseline = Average from January to February 2023																			
<b>Latin America</b>																				
<b>Regional</b>																				
Argentina	884.3	-0.1%	-1.8%	-78.9%	1,376,939	-0.7%	13.5%	469.3%	1,245	-26	-127	-722	289%	-0.1	-10%	7%	-3.4	3.0	38.6	157.9
Brazil	5.2	0.1%	0.7%	0.7%	24,877	0.3%	0.2%	18.4%	202	0	-3	-51	3%	--	2%	13%	-1.3	12.3	27.9	74.4
Chile	923.5	1.0%	5.3%	-12.0%	36.7	1.2%	8.5%	9.5%	118	0	1	-27	3%	0.0	-2%	0%	-3.5	5.7	69.4	39.4
Colombia	3888.4	0.1%	0.4%	22.6%	0.4	-0.2%	-2.7%	33.2%	290	2	-6	-87	7%	0.0	-3%	5%	-2.7	9.3	52.5	62.7
Dominican Republic	58.2	0.0%	2.0%	-3.1%	24.0	0.3%	0.4%	5.3%	217	-1	-16	-134	3%	0.0	--	--	-3.7	5.3	41.9	59.8
Ecuador	25000.0	0.0%	0.0%	0.0%	--	--	--	--	1,170	11	-108	-145	3%	0.1	--	20%	0.4	1.5	48.6	48.9
El Salvador	8.7	0.0%	0.0%	0.1%	--	--	--	--	741	4	54	-797	1%	--	--	--	-1.4	2.2	58.2	75.1
Jamaica	156.6	0.1%	-1.0%	-2.0%	--	--	--	--	152	2	-4	-76	6%	--	--	--	0.3	5.9	100.4	76.2
Mexico	16.8	0.6%	-2.0%	12.2%	3,443	0.6%	1.7%	23.8%	299	1	-27	-67	5%	0.0	2%	18%	-0.3	3.8	33.3	47.5
Panama	1.0	0.0%	0.0%	0.0%	--	--	--	--	260	-3	-2	41	2%	--	--	--	-3.2	4.0	155.9	57.1
Peru	3.7	-0.4%	0.0%	3.3%	7,981	-0.8%	8.0%	37.3%	150	-1	-4	-50	2%	0.0	-5%	20%	0.6	--	32.1	35.7
Trinidad & Tobago	6.8	0.0%	0.0%	-0.1%	--	--	--	--	173	1	7	-28	1%	--	--	--	8.2	7.7	55.6	59.1
Uruguay	38.5	-0.1%	0.7%	2.0%	--	--	--	--	76.00	0	0	-29	4%	0.0	--	52%	-5.0	10.3	68.9	59.3
Venezuela	248520.0	0.0%	0.0%	0.0%	0	2.1%	--	--	16,354	68	-2905	-24768	--	--	--	--	1.6	5.8	173.4	318.4
<b>Asia</b>																				
<b>Regional</b>																				
China	7.2	-0.1%	0.1%	-5.8%	435	-0.2%	3.4%	-7.8%	124	0	-6	-39	0%	-0.1	4%	7%	1.4	13.2	14.0	25.2
Hong Kong	7.8	0.0%	0.2%	0.3%	2,447	0.3%	15.1%	-10.1%	--	--	--	--	2%	0.0	4%	-10%	9.3	7.6	227.5	57.9
India	83.5	0.1%	0.0%	-1.6%	872	0.1%	-1.4%	18.8%	90	0	-8	-57	5%	-0.3	5%	2%	-0.9	8.7	17.5	57.7
Indonesia	16075.0	-0.2%	-1.5%	-5.5%	0.44	-0.2%	-2.3%	-0.9%	89	4	4	-55	3%	-0.1	-1%	33%	-0.1	6.6	27.5	47.0
Malaysia	4.7	0.1%	1.0%	-8.1%	339	0.2%	4.2%	-0.4%	75	0	-2	-29	2%	--	2%	31%	1.2	5.2	67.7	64.3
Pakistan	278.1	0.0%	-0.1%	-10.0%	265	0.3%	4.5%	56.8%	641	2	-59	-1831	17%	0.0	--	12%	-0.1	2.9	38.5	53.0
Philippines	57.8	-0.6%	-1.7%	-5.1%	114	-0.2%	-2.5%	-8.2%	75	4	5	-36	4%	-0.1	4%	-4%	-2.6	8.3	26.7	60.1
South Korea	1366.9	0.3%	1.6%	-7.8%	2	0.3%	0.8%	5.1%	--	--	--	--	3%	0.0	2%	7%	2.1	6.6	34.8	58.3
Taiwan	32.4	0.1%	0.0%	-6.5%	643	0.3%	0.4%	28.8%	--	--	--	--	2%	-0.1	4%	3%	13.9	19.6	27.3	25.7
Thailand	36.8	0.0%	-0.1%	-8.5%	37	0.0%	-1.2%	-24.2%	--	--	--	--	0%	0.0	-4%	4%	1.4	8.2	38.2	61.8
<b>Emerging Europe</b>																				
<b>Regional</b>																				
Bulgaria	1.8	0.1%	1.3%	0.5%	463	0.2%	4.0%	37.9%	--	--	--	--	3%	0.1	-7%	19%	-0.3	10.1	49.2	23.1
Croatia	7.1	0.3%	1.3%	0.0%	319	0.5%	4.2%	11.1%	10	26	33	-42	4%	0.0	-5%	16%	1.1	0.9	75.1	54.6
Hungary	358.6	0.4%	3.4%	1.2%	192	0.3%	4.6%	55.5%	139	-1	1	-75	4%	0.1	-3%	0%	0.5	3.4	135.8	71.2
Kazakhstan	442.1	-0.5%	1.5%	3.4%	--	--	--	--	62	0	-2	-131	9%	0.0	3%	35%	-3.8	5.9	67.8	24.7
Poland	4.0	0.6%	2.0%	10.6%	22,000	0.9%	5.5%	59.8%	95	1	6	7	1%	0.0	-6%	1%	1.6	5.5	51.1	49.8
Romania	4.6	0.0%	1.1%	-0.9%	3,752	0.0%	2.7%	41.2%	172	1	1	-73	6%	0.0	3%	7%	-7.0	5.7	49.4	47.4
Russia	90.9	0.0%	1.0%	-21.3%	12	1.5%	-4.3%	-15.0%	3,415	224	-819	--	8%	-0.3	4%	64%	2.5	19.0	17.2	13.5
Turkey	32.3	0.3%	0.5%	-41.7%	312	-0.3%	3.0%	14.4%	261	0	-17	-223	70%	-0.1	5%	5%	-4.1	4.0	44.4	29.8
Ukraine	39.7	-0.4%	-0.8%	-7.9%	13	-0.4%	-1.6%	-8.3%	4,035	58	540	-224	3%	-0.1	23%	-48%	-5.2	5.5	77.9	84.4
<b>Middle East and Africa</b>																				
<b>Regional</b>																				
Algeria	134.3	0.0%	0.4%	1.6%	--	--	--	--	--	--	--	--	4%	--	--	--	2.2	16.2	3.5	53.8
Egypt	47.1	0.7%	2.5%	-37.3%	539	1.6%	-13.7%	-10.0%	583	-1	-14	-196	33%	0.0	--	3%	-2.0	4.8	52.8	90.0
Ghana	14	-0.3%	-5.3%	-24.9%	0	-1.2%	4.6%	-0.4%	2,380	-1	-87	-489	25%	--	--	--	-2.8	3.5	36.6	64.3
Israel	4	0.2%	0.9%	-6.2%	545	0.2%	2.5%	3.7%	--	--	--	--	3%	-0.1	-13%	14%	3.5	14.1	26.3	59.6
Ivory Coast	608.8	-0.1%	1.1%	0.3%	--	--	--	--	363	0	18	-10	--	--	--	--	-4.2	4.9	43.7	58.1
Kenya	131	0.0%	0.6%	-5.0%	13	0.1%	-2.4%	-6.0%	472	2	-3	-166	5%	--	--	33%	-6.8	5.4	37.0	59.6
Lebanon	89509.7	0.0%	0.1%	-91.1%	0	0.1%	-2.9%	-97.4%	39,190	204	1084	-3170	70%	--	--	-29%	-22.0	17.6	402.8	197.9
Morocco	10	0.3%	1.6%	2.5%	1,211	-0.1%	1.8%	--	168	-1	4	-79	1%	0.1	--	--	-1.1	5.9	47.6	82.0
Nigeria	1407.6	3.5%	-17.5%	-67.5%	69	3.4%	-9.4%	-40.9%	528	1	3	-242	33%	--	--	--	2.1	6.2	25.7	37.8
Oman	0.4	0.0%	0.0%	0.0%	12,388	-0.2%	1.5%	0.2%	149	0	2	-81	0%	--	--	--	3.8	4.8	48.3	36.4
Qatar	3.6	0.0%	0.0%	0.0%	2,656	0.3%	-1.8%	-10.6%	66	0	-4	-30	2%	--	--	--	16.6	14.3	80.2	44.1
Saudi Arabia	3.75	0.0%	0.0%	0.1%	3,269	0.4%	-3.2%	16.3%	94	-1	-9	-25	2%	-0.1	-9%	--	6.3	28.9	31.6	29.7
Senegal	608.8	-0.1%	1.1%	0.3%	148	-0.3%	-5.9%	-27.3%	--	5	-13	-75	3%	0.0	5%	--	-9.3	3.8	54.5	57.2
South Africa	18.4	0.4%	3.4%	-4.8%	3,942	0.5%	7.8%	-6.1%	311	-3	-32	-40	5%	--	-4%	7%	-1.2	6.0	44.4	73.2
United Arab Emirates	4	0.0%	0.0%	0.0%	1,136	0.0%	-1.7%	23.6%	97	0	0	-24	5%	--	--	--	13.2	6.8	56.8	52.6

Sources: Haver Analytics, EIU, EDC Economics. \*Some values may be estimates. data from a week/month/year ago.

\*\*Bp difference between latest data reported and

Contact EDC Economics for more information.

[economics@edc.ca](mailto:economics@edc.ca)

EDC.ca - Economics

EDC does not represent or warrant the accuracy, timeliness or completeness of the information contained herein. EDC is not liable in any manner whatsoever for any loss or damage caused by or resulting from any inaccuracies, errors or omissions in the information contained in this document.

