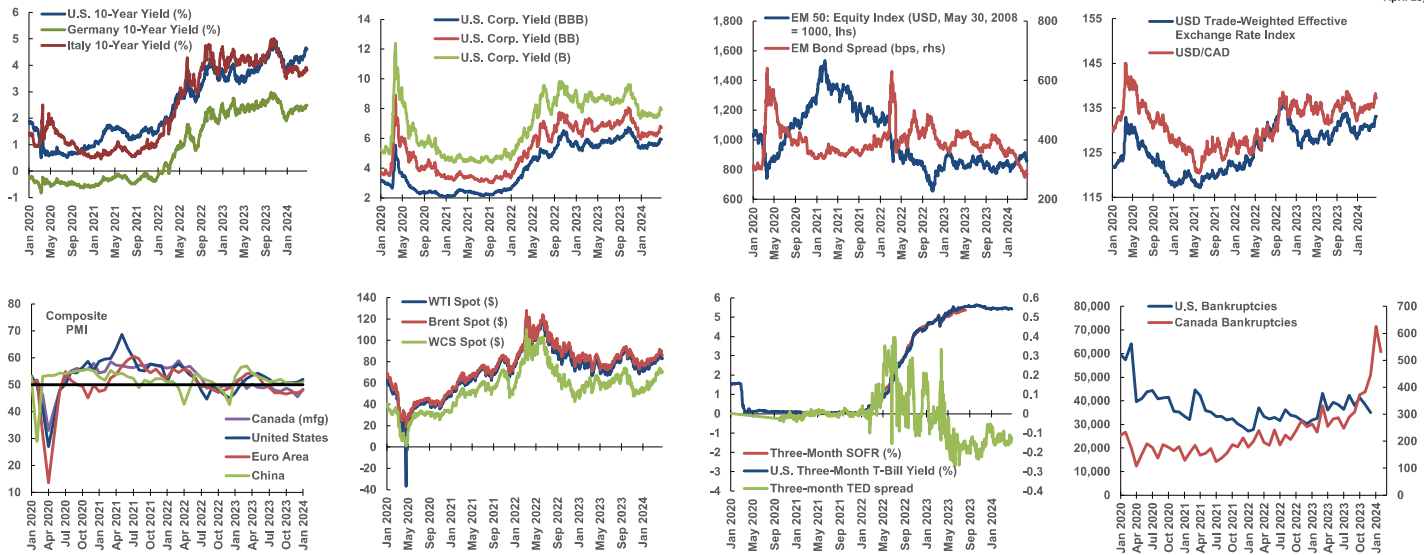


GLOBAL FINANCIAL MARKETS

EDC ECONOMICS

April 23, 2024



Indicator	Latest date (dd-)	Latest value	D/D	M/M	vs. baseline	One-year low	One-year high	2-2024	3-2024	4-2024	2022	2023	2024	10-year average	10-year low	10-year high
Cells are shaded if change exceeds coefficient of variation.																
Baseline = Average from Jan to Feb 2023																
Interest Rates																
U.S. 10-Year Bond Yield (%)	22-Apr	4.62	0.00	0.37	0.97	3.35	4.98	4.22	4.21	4.49	2.96	3.96	4.22	2.36	0.50	4.98
Three-Month Secured Overnight Financing Rate (SOFR) (%)	22-Apr	5.32	0.00	0.02	5.19	5.04	5.43	5.32	5.32	5.31	2.19	5.17	5.32	2.52	0.02	5.43
U.S. Three-Month Treasury Bill Yield (%)	22-Apr	5.42	-0.03	-0.04	5.60	5.10	5.63	5.44	5.47	5.44	2.10	5.28	5.45	1.48	0.00	5.63
U.S. Corp. Yield (BBB)	22-Apr	5.93	-0.01	0.37	0.42	5.31	6.72	5.60	5.58	5.80	4.79	5.83	5.59	3.92	2.05	6.72
U.S. Corp. Yield (BB)	22-Apr	6.71	-0.07	0.50	0.03	5.95	8.06	6.33	6.27	6.57	6.00	6.95	6.34	5.03	3.01	8.92
U.S. Corp. Yield (B)	22-Apr	7.93	-0.11	0.49	-0.49	7.34	9.62	7.60	7.48	7.78	7.78	8.62	7.62	6.70	4.36	12.39
Canada 10-Year Bond Yield (%)	22-Apr	3.75	0.02	0.27	0.69	2.76	4.26	3.51	3.45	3.66	2.78	3.36	3.47	1.92	0.43	4.26
Euro Bank Risk Spread (Three-Month Euribor - German Treasury Bill)	22-Apr	0.40	-0.03	0.04	-0.31	0.34	0.99	0.41	0.39	0.40	0.64	0.72	0.42	0.50	0.15	1.41
Italy 10-Year Bond Yield (%)	22-Apr	3.81	-0.10	0.11	-0.39	3.49	5.02	3.88	3.68	3.81	3.15	4.27	3.80	2.21	0.45	5.02
Emerging Market Bond Spread (EMBI+, basis points)	22-Apr	284	-4	-12	-94	274	429	343	307.52	286	433	390	328	381	272	641
Exchange Rate																
USD/CAD	22-Apr	1.37	0.2%	-1.0%	2.0%	1.31	1.39	1.35	1.35	1.37	1.30	1.35	1.35	1.30	1.06	1.46
USD/EUR	22-Apr	1.06	0.2%	1.9%	-1.0%	1.05	1.13	1.08	1.09	1.07	1.05	1.08	1.08	1.13	0.96	1.40
YEN/USD	22-Apr	154.66	-0.1%	-2.2%	17.5%	133.46	154.66	149	150	153	132	141	149	117	100	155
USD/GBP	22-Apr	1.23	0.8%	2.5%	1.4%	1.21	1.31	1.26	1.27	1.25	1.24	1.24	1.27	1.35	1.07	1.72
USD/AUD	22-Apr	0.64	-0.6%	1.5%	-7.2%	0.63	0.69	0.65	0.66	0.65	0.69	0.66	0.66	0.73	0.56	0.95
JPM Nominal Eff. Exch. Rate USD (positive = stronger USD)	22-Apr	133	-0.1%	-1.6%	4.1%	126.83	133.89	131	131	132	128	129	131	121	100	137
Stock Markets																
EM 50: Share Price Index (USD, May 30, 2008=1000)	22-Apr	863	1%	-2%	-2%	776	915	843	880	890	889	842	856	898	532	1,536
S&P/TSX Composite	22-Apr	21,872	0%	0%	7%	18,737	22,362	21,122	21,862	21,997	20,169	20,106	21,439	16,897	11,228	22,362
S&P 500	22-Apr	5,011	1%	-4%	25%	4,056	5,254	5,011	5,174	5,127	4,098	4,284	5,017	3,102	1,829	5,254
Euro Stoxx 50	22-Apr	4,937	0%	-2%	19%	4,014	5,083	4,759	4,993	4,989	3,758	4,274	4,792	3,574	2,386	5,083
Nikkei 225	22-Apr	37,439	1%	-7%	39%	28,416	40,888	37,834	39,871	38,986	27,263	30,658	37,818	23,216	14,006	40,888
Commodities																
CRB Spot Index	22-Apr	551	0%	3%	-1%	505	569	522	532	546	593	546	526	464	348	644
Gold	22-Apr	2,361	-1%	9%	26%	1,822	2,395	2,026	2,162	2,336	1,802	1,943	2,122	1,516	1,051	2,395
WTI Crude One-Month Futures	22-Apr	83	0%	1%	7%	67	94	77	81	85	95	78	79	63	-37	124
Copper	22-Apr	9,814	1%	12%	9%	7,812	9,814	8,310	8,681	9,321	8,815	8,479	8,602	6,919	4,310	10,730
Baltic Freight Index	22-Apr	1,882	-2%	-11%	136%	919	3,346	1,650	2,212	1,731	1,929	1,392	1,808	1,378	290	5,650
Monthly Indicators																
Canadian Bankruptcies: All Industries (number)	Feb	532	--	-15%	--	234.0	625.0	308	--	--	161.8	218.4	578.5	235.5	108.0	625.0
U.S. Bankruptcy Filings (units)	Dec	34,994	--	-9.0%	--	32,539	43,173	--	--	--	34,445	32,305	--	55,785	27,097	93,709
U.S. Auto Sales (million units, SAAR)	Mar	15.6	--	-1.9%	--	14.9	16.2	15.7	15.6	--	15.1	13.9	15.4	16.2	8.6	18.4
U.S. ISM Manuf. PMI (SA)	Mar	50.3	--	0.1	--	46	50	50.3	48.6	--	60.6	53.5	49.1	53.8	41.8	64.0
Japan Business Conditions Large Manufacturers	Mar	11	--	--	--	1	12	--	--	--	14	10	11	9	-34	25
China Manufacturing Purchasing Managers Index (SA)	Mar	50.8	--	0.0	--	49	53	50.8	50.2	--	50.5	49.1	49.7	50.2	35.7	52.6
Canada Merchandise Trade Exports to U.S. (CAD billions)	Feb	50.2	--	3.3%	--	47.0	51.6	51,622.1	--	--	39,698.1	49,574.1	49,404.4	37,941.9	20,506.6	52,579.4

Sources: Haver Analytics, EIU, EDC Economics. * Some values may be estimates, data from a week/month/year ago.

* Bbp difference between latest data reported and

Contact EDC Economics for more information.

economics@edc.ca

EDC.ca - Economics

EDC doesn't represent or warrant the accuracy, timeliness or completeness of the information contained herein. EDC isn't liable in any manner whatsoever for any loss or damage caused by or resulting from any inaccuracies, errors or omissions in the information contained in this document.

bbb



GLOBAL FINANCIAL MARKETS

COMPILED BY EDC ECONOMICS

April 23, 2024

	Currency (vs. USD)				Stock market indices (% change based on USD market cap)				Sovereign bond spreads over U.S. government (basis points)				Consumer price index	Unemployment*	Industrial production**	Exports	Current acct. / GDP	Import cover (months)	External debt / GDP	Govt. debt / GDP			
	Apr. 22	One-day	One-month	vs. baseline	Apr. 22	One-day	One-month	vs. baseline	Apr. 22	One-day diff.*	One-month diff.*	Diff. vs. baseline*	Y/Y	p.p Y/Y	Y/Y	Y/Y					2023*		
																					Apr. 22	One-day	One-month
Latin America																							
Regional																							
Argentina	872.0	-0.1%	-1.8%	-78.6%	1,268,376	2.1%	4.2%	424.4%	1,143	-71	-271	-824	288%	-0.1	-11%	7%	-3.3	3.0	38.6	152.8			
Brazil	5.2	0.7%	-3.7%	0.4%	24,300	0.8%	-4.8%	15.6%	205	-2	7	-48	3%	--	1%	13%	-1.3	12.3	27.4	74.4			
Chile	952.6	0.3%	2.7%	-14.7%	33.9	0.3%	-1.1%	1.3%	119	-1	-6	-26	3%	0.0	-2%	0%	-3.5	5.7	69.0	39.4			
Colombia	3930.5	0.5%	-0.9%	21.3%	0.3	0.8%	1.1%	27.9%	298	-7	10	-79	7%	0.0	-6%	5%	-2.7	9.3	52.5	62.7			
Dominican Republic	59.0	0.3%	0.4%	-4.5%	22.8	0.6%	1.5%	0.1%	230	-4	4	-121	3%	0.0	--	--	-3.7	5.3	41.9	59.8			
Ecuador	25000.0	0.0%	0.0%	0.0%	--	--	--	--	1,138	-37	-80	-177	2%	0.0	--	20%	0.4	1.5	48.6	48.9			
El Salvador	8.8	-0.1%	-0.1%	-0.1%	--	--	--	--	684	-8	-17	-854	1%	--	--	--	-1.4	2.2	58.2	75.1			
Jamaica	155.9	-0.2%	-1.3%	-1.5%	--	--	--	--	156	-1	-10	-72	6%	--	--	--	0.3	5.9	100.4	76.2			
Mexico	17.2	-0.5%	-2.7%	9.3%	3,273	-0.1%	-2.7%	17.7%	316	-6	-1	-50	4%	-0.1	2%	18%	-0.3	3.8	33.3	47.5			
Panama	1.0	0.0%	0.0%	0.0%	--	--	--	--	272	-3	9	53	2%	--	--	--	-3.2	4.0	155.9	57.1			
Peru	3.7	0.3%	0.2%	4.0%	7,520	0.4%	-6.1%	29.3%	156	-1	8	-44	3%	0.0	-5%	20%	0.6		32.1	35.7			
Trinidad & Tobago	6.7	0.4%	0.7%	0.3%	--	--	--	--	165	-3	-15	-36	1%	--	--	--	4.5	7.8	55.4	59.9			
Uruguay	38.6	-0.4%	-1.7%	1.9%	--	--	--	--	77.00	-1	1	-28	4%	0.0	--	52%	-5.0	10.3	68.9	59.3			
Venezuela	248520.0	0.0%	0.0%	0.0%	0	-2.8%	--	--	19,366	-143	-6471	-21756	--	--	--	--	1.6	5.8	173.4	318.4			
Asia																							
Regional																							
China	7.2	-0.1%	-0.5%	-5.9%	420	-0.3%	-0.5%	-10.9%	130	0	-3	-33	0%	-0.1	4%	7%	1.5	13.3	14.1	25.2			
Hong Kong	7.8	0.0%	-0.2%	0.0%	2,107	0.5%	0.0%	-22.6%	--	--	--	--	2%	0.0	4%	-10%	9.6	7.6	215.0	57.9			
India	83.4	0.1%	0.0%	-1.4%	883	0.4%	0.6%	20.4%	100	-1	-3	-47	5%	-0.3	6%	2%	-0.6	8.7	17.5	57.8			
Indonesia	16230.0	0.1%	-2.7%	-6.4%	0.44	0.1%	-7.8%	-2.2%	93	4	6	-51	3%	-0.1	-1%	33%	-0.1	6.6	27.5	47.0			
Malaysia	4.8	0.1%	-1.1%	-9.0%	326	0.4%	-0.8%	-4.0%	81	0	0	-23	2%	--	5%	31%	1.2	5.2	67.8	64.3			
Pakistan	278.6	0.0%	0.0%	-10.2%	256	0.3%	9.5%	51.5%	690	-9	20	-1782	21%	0.0	--	12%	0.2	2.9	38.5	51.5			
Philippines	57.5	0.0%	-2.1%	-4.6%	112	0.0%	-9.7%	-10.0%	77	5	6	-34	4%	-0.1	9%	-4%	-2.6	8.3	26.7	60.1			
South Korea	1379.4	-0.3%	-2.9%	-8.6%	2	0.1%	-8.7%	0.4%	--	--	--	--	3%	0.0	10%	7%	2.1	6.6	33.1	58.3			
Taiwan	32.6	-0.2%	-2.4%	-7.0%	595	-0.4%	-7.5%	19.2%	--	--	--	--	2%	-0.1	4%	3%	13.2	17.1	27.5	25.7			
Thailand	37.1	-0.6%	-1.9%	-9.2%	36	-0.2%	-5.3%	-26.0%	--	--	--	--	0%	0.0	-3%	4%	1.4	8.2	38.2	61.8			
Emerging Europe																							
Regional																							
Bulgaria	1.8	-0.2%	-1.9%	-1.0%	438	-0.2%	-2.5%	30.6%	--	--	--	--	3%	0.1	-8%	19%	0.9	11.0	46.2	25.4			
Croatia	7.1	0.3%	1.3%	0.0%	320	0.6%	4.0%	11.2%	10	26	33	-42	4%	0.0	-6%	16%	1.1	0.9	75.1	54.6			
Hungary	370.1	-0.1%	-1.0%	-2.0%	176	-0.1%	-1.4%	42.4%	144	-1	-1	-70	4%	0.1	1%	0%	0.5	3.4	135.8	71.2			
Kazakhstan	445.8	0.1%	1.0%	2.5%	--	--	--	--	69	3	-5	-124	9%	0.0	3%	35%	-3.8	5.9	67.8	24.7			
Poland	4.1	-0.2%	-1.9%	8.4%	20,840	0.3%	1.7%	51.4%	94	1	5	6	1%	0.0	-6%	1%	1.6	5.6	51.2	49.8			
Romania	4.7	-0.1%	-1.6%	-2.1%	3,614	0.0%	-1.8%	36.0%	177	0	2	-68	7%	0.0	-2%	7%	-6.1	5.8	48.0	45.9			
Russia	90.9	0.0%	1.0%	-21.3%	12	-0.1%	-2.9%	-13.0%	3,415	224	-819	--	8%	-0.2	9%	64%	2.4	18.9	16.5	14.3			
Turkey	32.5	0.0%	-1.1%	-42.2%	297	0.2%	5.0%	8.9%	272	-2	-26	-212	68%	-0.1	12%	5%	-4.1	4.0	44.4	29.8			
Ukraine	39.8	-0.5%	-2.2%	-8.1%	13	-0.5%	-3.5%	-8.4%	4,041	260	596	-218	3%	-0.1	23%	-48%	-5.2	5.5	77.9	84.4			
Middle East and Africa																							
Regional																							
Algeria	134.8	-0.2%	-0.2%	1.2%	--	--	--	--	--	--	--	--	4%	--	--	--	0.9	14.1	3.4	58.4			
Egypt	48.2	0.3%	-1.6%	-38.7%	584	-1.3%	-1.9%	-2.5%	595	-15	17	-184	33%	0.0	--	3%	-2.0	4.8	52.8	90.0			
Ghana	13	-0.1%	-1.7%	-21.1%	0	-1.2%	3.1%	-0.8%	2,342	24	-34	-527	26%	--	--	--	-2.8	3.5	36.6	64.3			
Israel	4	-0.3%	-3.4%	-7.5%	520	1.2%	-7.1%	-1.0%	--	--	--	--	3%	-0.1	-3%	14%	3.5	14.1	26.3	59.6			
Ivory Coast	615.8	0.0%	-1.7%	-0.9%	--	--	--	--	355	-3	3	-18	--	--	--	--	-4.2	4.9	43.7	58.1			
Kenya	132	-0.3%	0.7%	-5.4%	13	-0.7%	3.5%	-6.6%	463	-9	-21	-175	6%	--	--	33%	-6.8	5.4	37.0	59.6			
Lebanon	89600.0	0.0%	0.1%	-91.1%	0	-0.1%	-0.4%	-97.4%	40,052	215	-10766	-2308	70%	--	--	-29%	-22.0	17.6	402.8	197.9			
Morocco	10	-0.2%	-0.7%	1.1%	1,204	-0.5%	0.0%	--	170	3	-7	-77	1%	0.1	--	--	-1.1	5.9	47.6	82.0			
Nigeria	1252.1	-8.1%	13.1%	-63.4%	80	-8.1%	21.6%	-32.2%	513	-13	-10	-257	33%	--	--	--	2.1	6.2	25.7	37.8			
Oman	0.4	0.0%	0.0%	0.0%	12,199	-0.1%	-2.0%	-1.3%	145	0	-9	-85	0%	--	--	--	3.8	4.8	47.9	36.1			
Qatar	3.6	0.0%	0.0%	0.0%	2,654	-1.3%	-5.4%	-10.6%	71	1	3	-25	2%	--	--	--	16.3	15.0	77.3	42.6			
Saudi Arabia	3.75	0.0%	0.0%	0.1%	3,335	-0.1%	-2.3%	18.6%	100	-4	0	-19	2%	-0.1	-8%	--	6.3	28.9	31.6	29.7			
Senegal	615.8	0.0%	-1.7%	-0.9%	156	-0.1%	-1.3%	-23.4%	--	-8	-61	-100	3%	0.0	5%	--	-9.3	3.8	54.5	57.2			
South Africa	19.2	-0.4%	-1.6%	-8.9%	3,516	-0.3%	-2.1%	-16.2%	333	-2	-8	-18	5%	--	3%	7%	-1.2	6.0	44.4	73.2			
United Arab Emirates	4	0.0%	0.0%	0.0%	1,135	-0.1%	-2.6%	23.4%	98	0	1	-23	5%	--	--	--	17.7	6.6	56.6	52.2			

Sources: Haver Analytics, EIU, EDC Economics. *Some values may be estimates. data from a week/month/year ago.

* Bbp difference between latest data reported and

Contact EDC Economics for more information.

economics@edc.ca

EDC.ca - Economics

EDC does not represent or warrant the accuracy, timeliness or completeness of the information contained herein. EDC is not liable in any manner whatsoever for any loss or damage caused by or resulting from any inaccuracies, errors or omissions in the information contained in this document.

